

THE CONCRETE HERALD

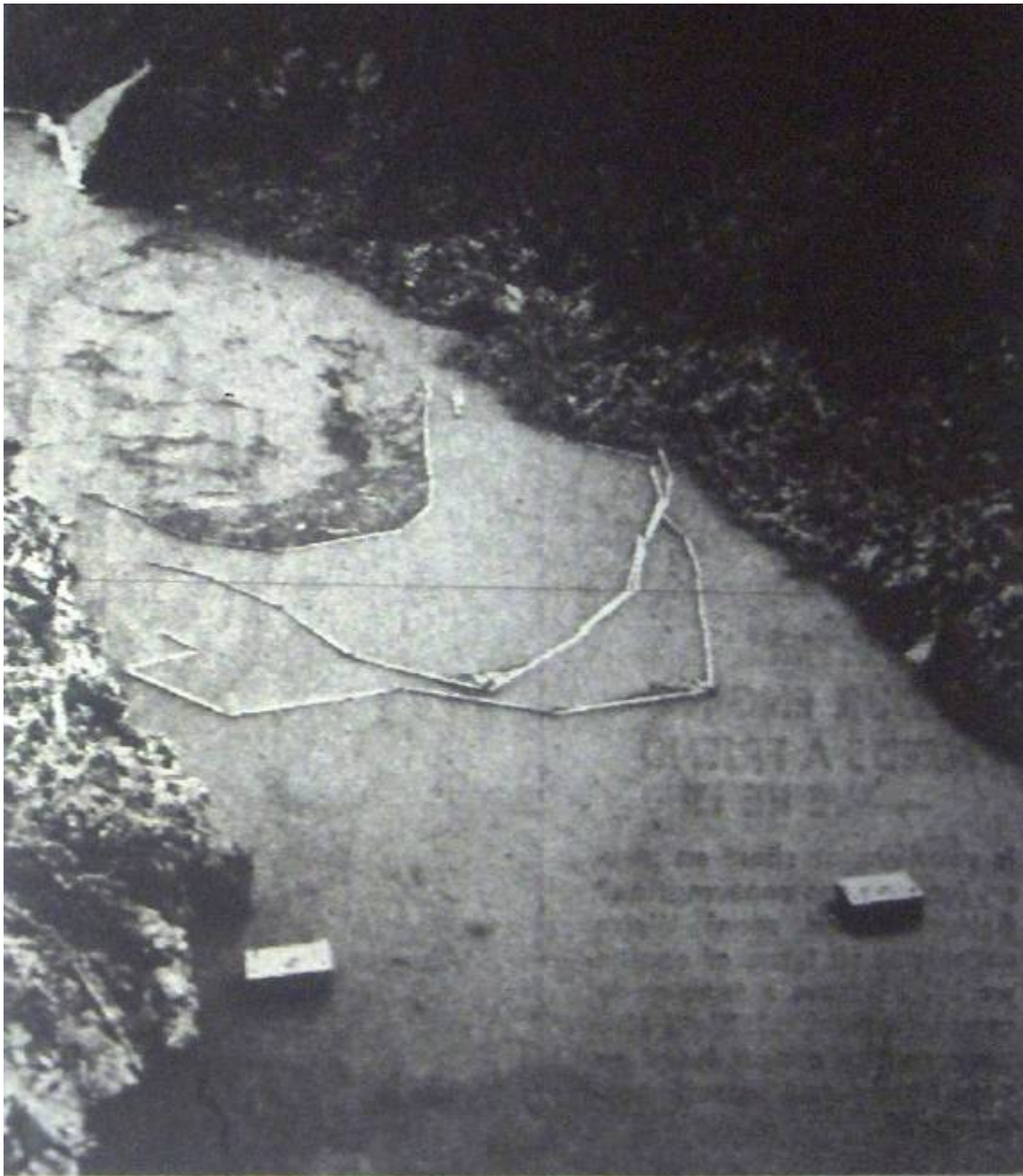
Formerly the Hamilton Herald Established Nov. 23, 1901. Oldest Paper in the Upper Skagit.

July 28, 1960

Old Gorge Dam Disappears From Sight As New Skagit Lake Builds Up Behind Growing High Dam



Seattle City Ligh's Gerge Diversion Dam, furthest downstream of the three, as it appeared at the start of construction on new dam.



Just the tops of the towers remain showing of the old Gorge dam, and also flooded out is the old Newhalem-Diablo Stretch of the Skagit River Railway road bed. Part of the highway can be seen in the upper left hand section, still above water. Booms collect debris.

Only the tops of the sluice gate towers of the old Gorge Diversion Dam remain visible as the waters continue to rise behind Seattle City Light's new high Gorge Dam. The crest of the concrete spillway of the diversion dam was about 35 feet under water

at the time the accompanying picture was taken. It will be about 100 feet under water when the reservoir behind the high dam is filled.

Gradually, as the reservoir fills, it is inundating the old Newhalem-Diablo road and

will create a lake that will stretch about five miles to the tailrace of the Diablo Powerhouse. The maximum water levels of the reservoir will be limited by the height of the spillway crest until the spillway gates are installed.

Already one block of the dam has reached the full height of 300 feet and the lowest section is within 50 feet of the top. Practically all concrete in the dam will be placed by September 1st.

Lighting Superintendent Paul J. Raver reports that the generators in operation already are showing increased capacity as a result of the higher head of water and plant modernization.

“When the dam and modernization of the powerhouse are completed, it will increase the capacity of the plant from 108,000 kilowatts to an estimated 165,000 kilowatts,” Raver said.

The Gorge Powerhouse, closed down since May 29, while the old intake to the power tunnel was sealed off, has now resumed operation. Three generating units are in use, of which two have been modernized. Installation of a larger waterwheel and modernization of the third unit is nearing completion. The fourth unit will be changed next summer.